



# ET300 Series

Lever handles

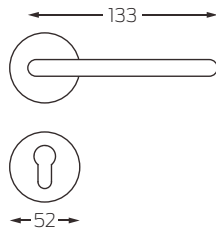


The ET300 series lever handles offer a diverse selection of modern designs and finishes, making them suitable for various door profiles and designs. Crafted from high-quality zinc alloy material, these lever handles are not only durable and corrosion-resistant but also lightweight and budget-friendly. With their versatile design, the ET300 series lever handles can accommodate a wide range of door thicknesses, ranging from 38mm to 50mm.



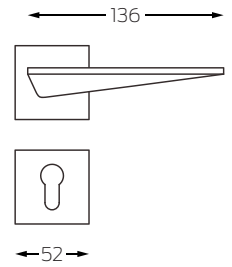
### ET351

Material: Zinc Alloy  
Door Thickness: 38-50mm



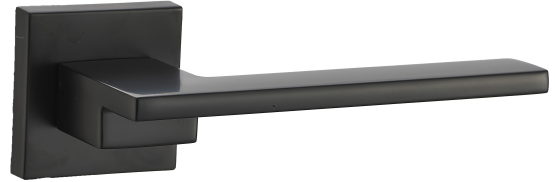
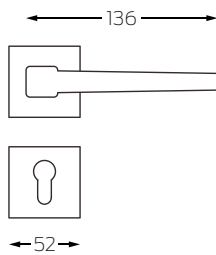
### ET352

Material: Zinc Alloy  
Door Thickness: 38-50mm



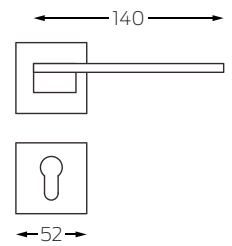
### ET353

Material: Zinc Alloy  
Door Thickness: 38-50mm



### ET354

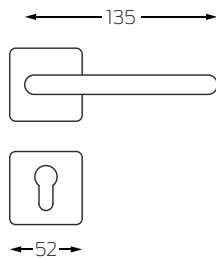
Material: Zinc Alloy  
Door Thickness: 38-50mm





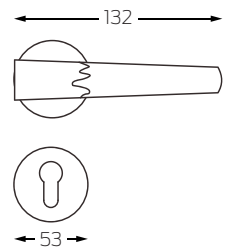
### ET355

Material: Zinc Alloy  
Door Thickness: 38-50mm



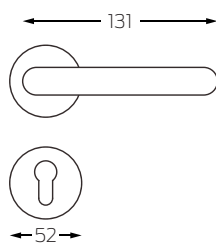
### ET358

Material: Zinc Alloy  
Door Thickness: 38-50mm



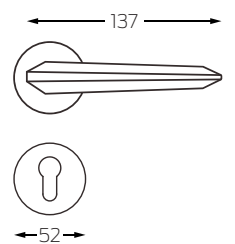
### ET361

Material: Zinc Alloy  
Door Thickness: 38-50mm



### ET362

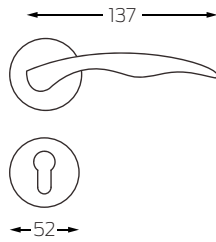
Material: Zinc Alloy  
Door Thickness: 38-50mm





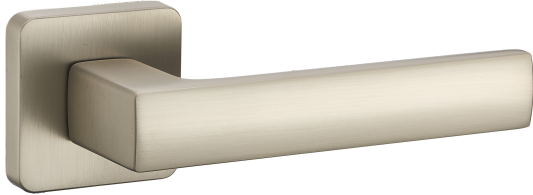
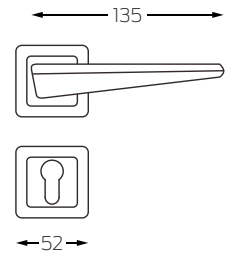
### ET363

Material: Zinc Alloy  
Door Thickness: 38-50mm



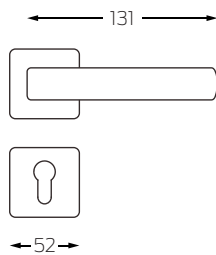
### ET365

Material: Zinc Alloy  
Door Thickness: 38-50mm



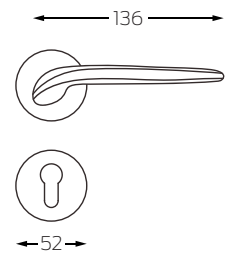
### ET367

Material: Zinc Alloy  
Door Thickness: 38-50mm



### ET368

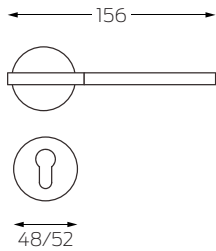
Material: Zinc Alloy  
Door Thickness: 38-50mm





### ET370

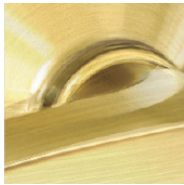
Material: Zinc Alloy  
Door Thickness: 38-50mm



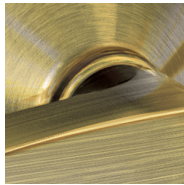
## Finishes



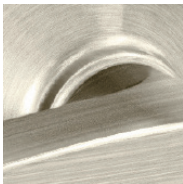
Bright Brass



Satin Brass



Antique Bronze



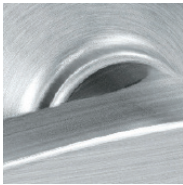
Satin Nickel



Matte Black



Bright Chrome



Satin Chrome

Disclaimer: The finishes depicted in the pictures are for illustrative purposes only and may differ from the actual products. Please note that variations in color, texture, and appearance can occur due to factors such as lighting conditions and individual monitor settings. It is recommended to refer to physical samples or consult with a representative for an accurate representation of the finishes before making a final decision.

The mentioned finishes serve as a reference. If you require alternative finishes, please consult your respective sales representative for more detailed information.